

OKLAHOMA DEPARTMENT OF TRANSPORTATION					
FED. ROAD DIST. NO.	STATE	PROJ. NO.	FISCAL YEAR	SHEET NO.	TOTAL SHEETS
6	OKLA.				
DESCRIPTION			REVISIONS	DATE	

SEC. 35  
T-14-N, R-4-W.I.M.

SEC. 35  
T-14-N, R-4-W.I.M.

SEC. 36  
T-14-N, R-4-W.I.M.

SEC. 36  
T-14-N, R-4-W.I.M.

1057 + 00  
MATCH LINE

1088 + 00  
MATCH LINE

1060 + 00  
P.O.T. STA. 1060+97.19  
☉ SURVEY (NO. 4 REBAR)

1065 + 00

P.O.T. STA. 1069+52.17 (P.K. NAIL)  
☉ SURVEY ON EW-94.5 1/4 SECTION LINE 2648.85  
EAST TO CENTER SECTION & 7.09 WEST TO  
1/4 CORNER

1070 + 00

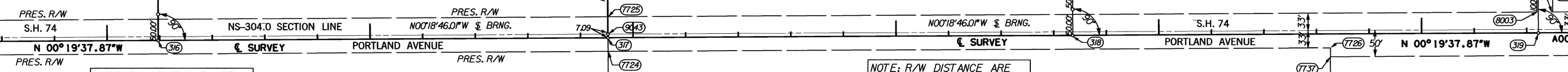
1075 + 00

P.O.T. STA. 1078+36.04  
☉ SURVEY (NO. 4 REBAR)

1080 + 00

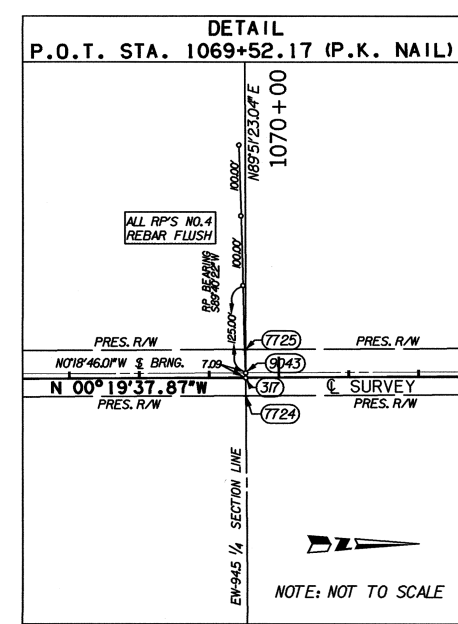
1085 + 00

P.O.T. STA. 1087+21.86  
☉ SURVEY (NO. 4 REBAR)

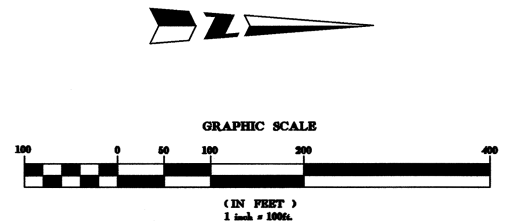


NOTE: R/W DISTANCE ARE FROM THE ☉ NOT ☉ SURVEY

NOTE: R/W DISTANCE ARE FROM THE ☉ NOT ☉ SURVEY



NOTE: NOT TO SCALE



HAROLD GUNNING SURVEYING			
1108 EAST MAIN C.A. NO. 2248		CORDELL, OKLAHOMA 73632 EXPIRATION DATE: 6-30-2005	
OKLAHOMA DEPARTMENT OF TRANSPORTATION SURVEY DIVISION			
<b>SURVEY DATA SHEET</b>			
SHEET 9 OF 43			
PLS	GHG		
DRAWN	TRK		
CHECKED			
APPROVED			
CREW	GUNNING	SWO 3868 (1)	PROJECT NO. 14964(08) SHEET NO. S6